

# FOOTBALL FIELD FOUR ROW PROSPORT™ SYSTEM

## IRRIGATION DESIGN CRITERIA

### Water Source

<b>Pressure Requirements:</b>	<b>95 PSI</b> working pressure at field location*
	<b>80 PSI</b> at base of sprinkler head*
<b>Flow Requirements:</b>	<b>104 GPM</b> Maximum flow rate*
	<b>87 GPM</b> Minimum flow rate*

Water shall be delivered to the site at sufficient pressure and flow to provide optimum performance.

Water service line, water meter, backflow prevention device, pump station, pressure controls, check valves, surge protection, and performance of the water source are not included in these drawings.

*\*Differences in available flow and/or pressure will require design changes.*

### Head Layout

Head layout and spacing are based on field dimensions. All heads of each row are spaced equally across the field. All heads are equally spaced along the length of the field. Head spacing is adjusted at field ends due to narrowing of irrigated areas by the track.

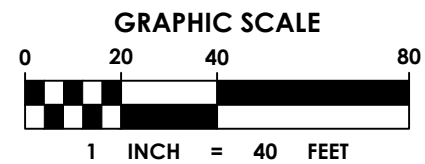
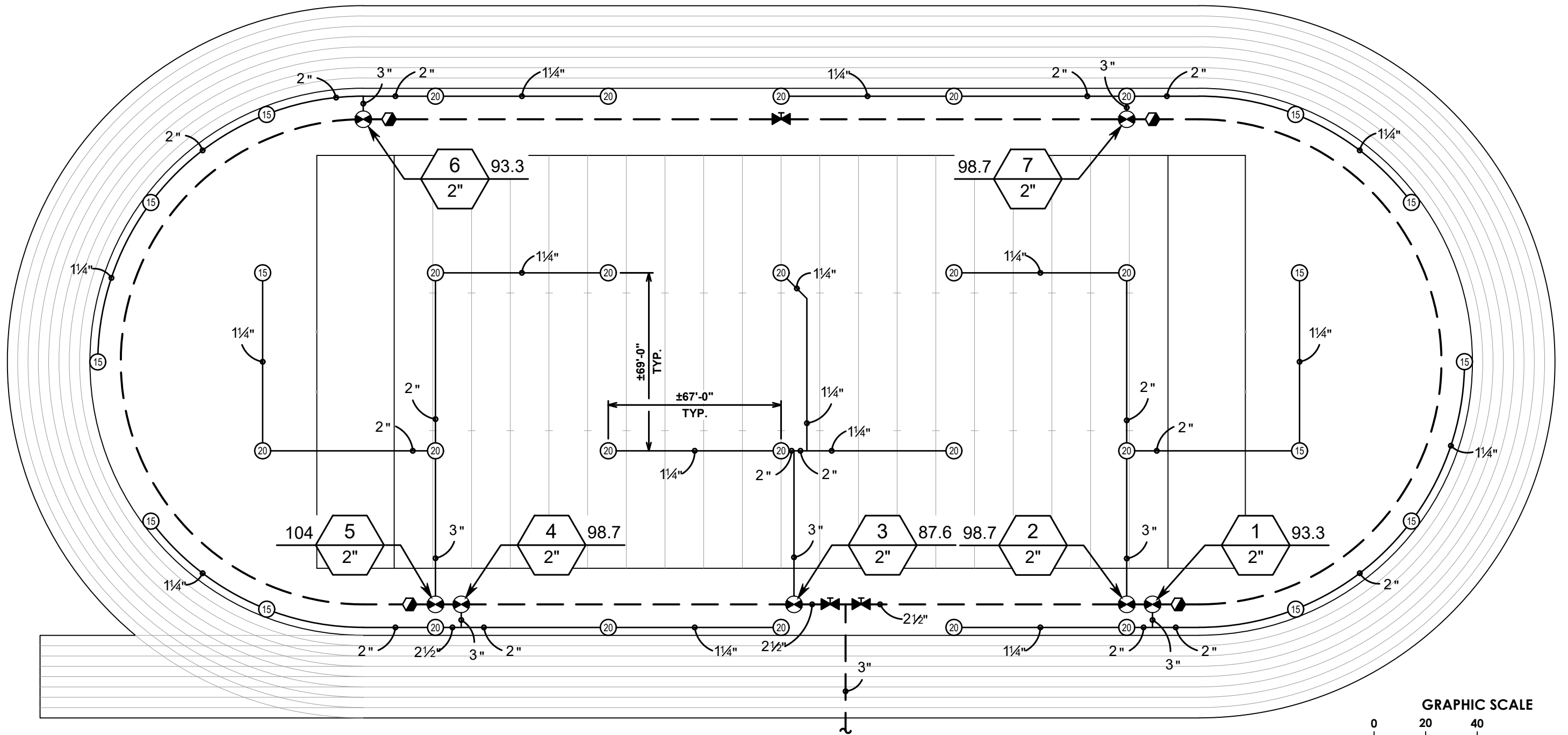
**General head spacing is as follows:** Head Spacing: **67'** | Lateral Spacing: **69'**

Head and lateral spacing will vary with dimensions of field. Spacing adjustments may be necessary to avoid overspray onto track. All head and nozzle selections should be based on head performance, spacing, and arc of coverage in accordance with field dimensions.

THIS PLAN IS PROVIDED BY K-RAIN AS A DESIGN GUIDE ONLY AND OFFERS NO GUARANTEE FOR PROJECTS INSTALLED FROM THIS PLAN. DUE TO MULTIPLE VARIABLES RELATED TO PROJECT CONDITIONS, K-RAIN RECOMMENDS THAT A QUALIFIED IRRIGATION DESIGNER BE CONSULTED.



**K-Rain Manufacturing Corp.**  
1640 Australian Avenue  
Riviera Beach, FL 33404 USA  
+1 561 844-1002  
FAX: +1 561 842-9493  
**1.800.735.7246 | [www.krain.com](http://www.krain.com)**

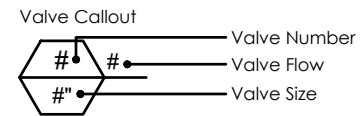


### IRRIGATION SCHEDULE

SYMBOL	MANUFACTURER/MODEL/DESCRIPTION	QTY	PSI	GPM	RADIUS
15	K-Rain ProSport 14003-SS 4" pop-up rotor, triple-nozzle configuration, with check valve and stainless steel riser. Adjustable and Full Circle.	13	80	16.5	63'
20	K-Rain ProSport 14003-SS 4" pop-up rotor, triple-nozzle configuration, with check valve and stainless steel riser. Adjustable and Full Circle.	21	80	21.9	69'
⊗	K-Rain ProSeries 7202 Remote control valve with 2" female thread fitting, glass filled nylon construction, flow control, and self-cleaning diaphragm.	7			
⊕	Quick Coupling Valve	4			
⊘	Gate Valve (Line Size)	3			
—	Irrigation Lateral Line				
- - -	Irrigation Mainline				

### VALVE SCHEDULE

NUMBER	MODEL	SIZE	TYPE	GPM	PSI	PRECIP
1	K-Rain ProSeries 7202	2"	Turf Rotor	93.30	90.03	0.95 in/h
2	K-Rain ProSeries 7202	2"	Turf Rotor	98.70	91.48	0.43 in/h
3	K-Rain ProSeries 7202	2"	Turf Rotor	87.60	89.25	0.45 in/h
4	K-Rain ProSeries 7202	2"	Turf Rotor	98.70	90.77	0.97 in/h
5	K-Rain ProSeries 7202	2"	Turf Rotor	104.10	92.48	0.43 in/h
6	K-Rain ProSeries 7202	2"	Turf Rotor	93.30	89.68	0.95 in/h
7	K-Rain ProSeries 7202	2"	Turf Rotor	98.70	90.95	0.97 in/h



### GENERAL NOTES

- Head locations shown to scale.
- All valves shall be located outside of sports fields or designated play areas.
- Mainline and lateral pipe locations shown on the plan are schematic and shall be adjusted in the field.
- Pipe sizes shall conform to those shown on the drawings. No substitutions of smaller pipe sizes shall be permitted.
- Ensure all mainline piping is properly restrained.
- Ensure all irrigation components are installed according to local, state, or federal code.
- Refer to K-Rain Installation Details.
- Refer to K-Rain Product Brochure for Performance Data.
- For reclaimed water identification, add RCW to model numbers.

**NOTE**

THIS PLAN IS PROVIDED BY K-RAIN AS A DESIGN GUIDE ONLY AND OFFERS NO GUARANTEE FOR PROJECTS INSTALLED FROM THIS PLAN. DUE TO MULTIPLE VARIABLES RELATED TO PROJECT CONDITIONS, K-RAIN RECOMMENDS THAT A QUALIFIED IRRIGATION DESIGNER BE CONSULTED.

**VERIFY SCALES**

0 — 1"

IF NOT ONE INCH ON THIS SHEET, ADJUST SCALES ACCORDINGLY

**DRAWING TITLE**

**FOOTBALL FIELD**  
**FOUR ROW PROSPORT**

